

STOCKWATCH

MARKET

92.5 million stock day-traders worldwide

high salaries and **disposable income**

the majority are **unprofitable**

PRODUCT

raw data stream of stock-related tweets



novel algorithm using sentiment analysis and machine learning



directional stock price predictions

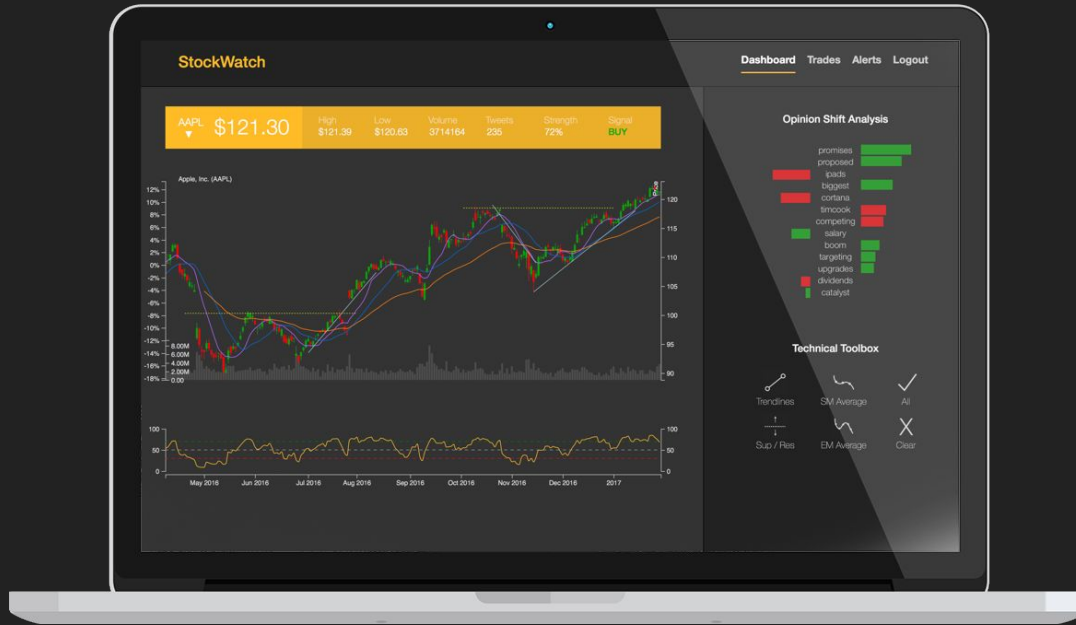
RESEARCH

468 trades placed

5.13% monthly return

82.3% annual return

PRODUCT DEMO



FINANCIALS

- + the four streams of **revenue** - trial purchase, monthly subscription (standard/premium), transaction commission
- + major **costs** include purchase of data, staff salaries, and marketing
- + expect to turn a monthly profit by month **17** and a total net profit by month **30**
- + cash balance of **£1.3 million** after five years with a **£4 million** company valuation

PROPOSITION

£180,000

investment



£900,000

return

STOCKWATCH